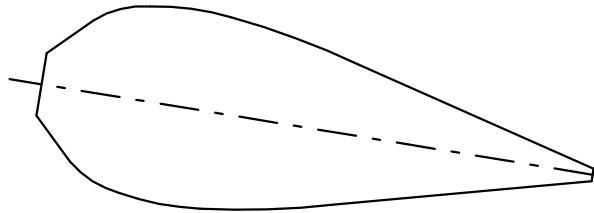
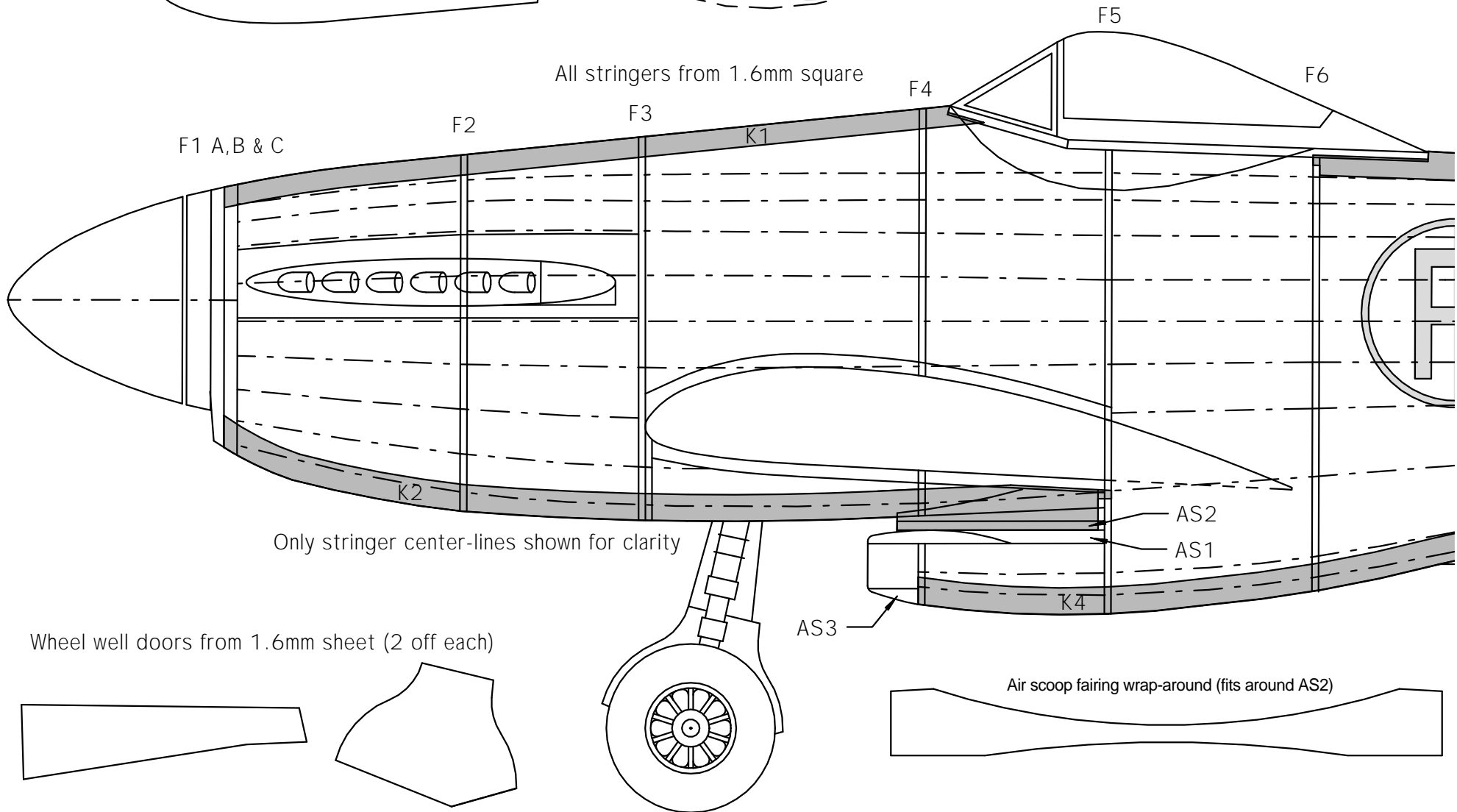
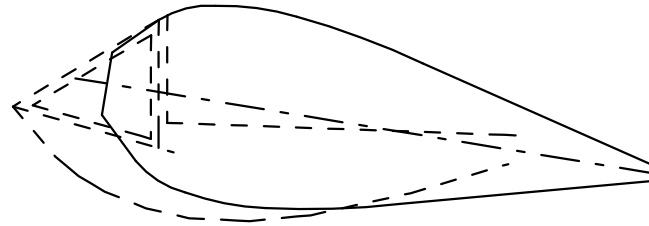
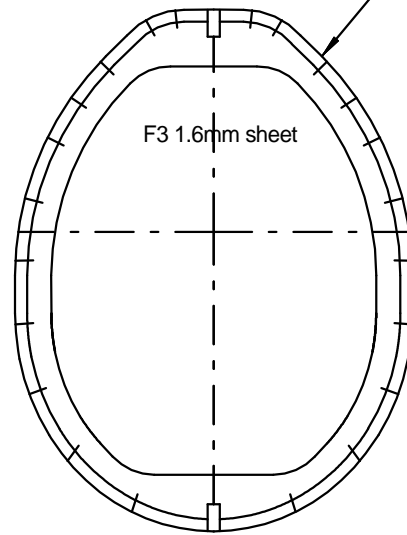
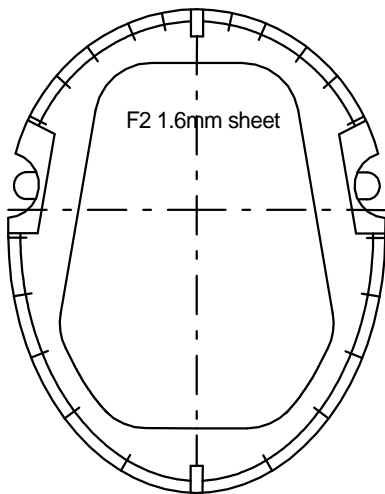
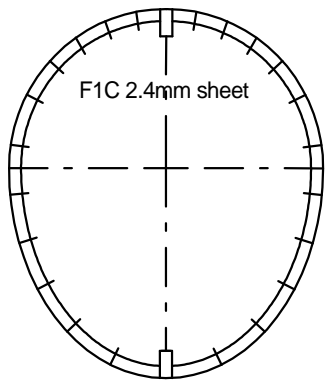
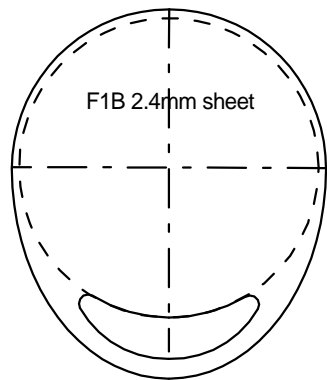


Canopy is thermoformed over a male tool.
 Canopy cross-section is circular - start
 by turning up this blank using a hand-drill
 or drill press.

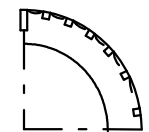


Then add flat sections to front and
 extend flanks downward
 to complete canopy form.



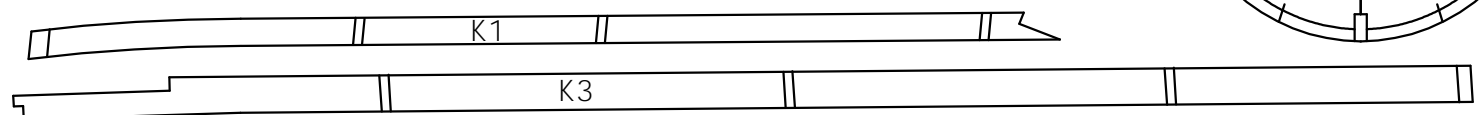
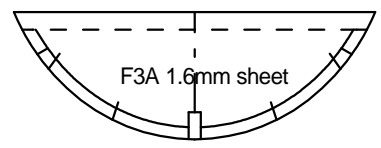


Cut formers to the outside line for "notched" construction

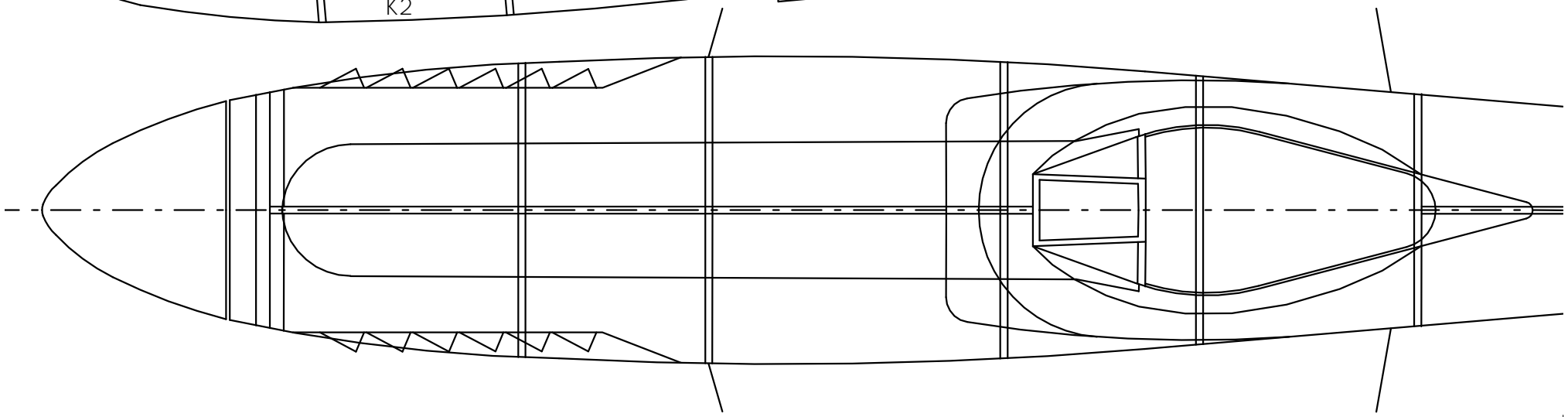
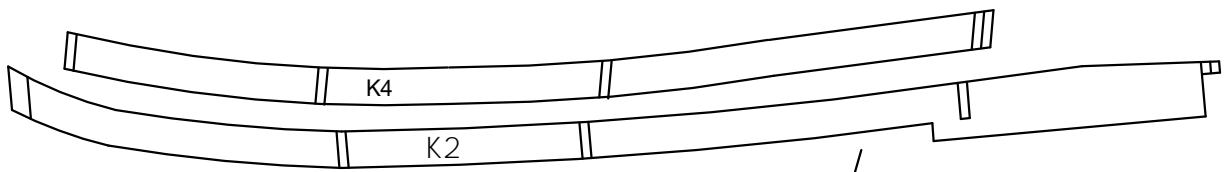
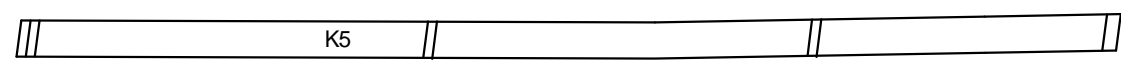


Example of "notched" construction showing stringers set into former

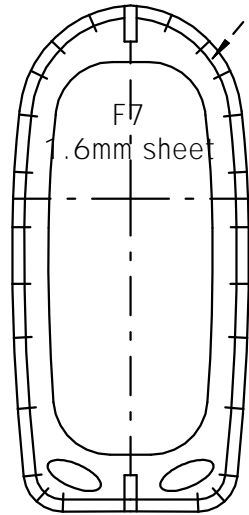
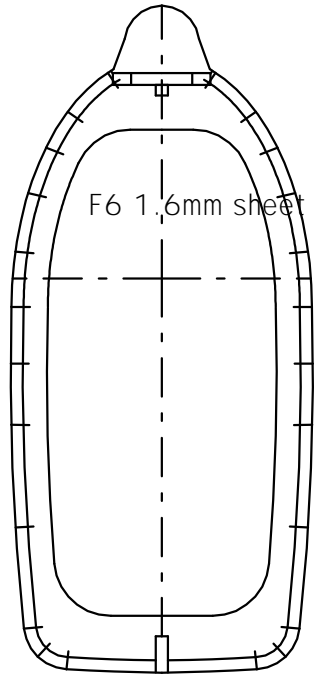
Former can be "scalloped" by stringers once glue has dried prevent the "starved horse"



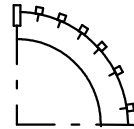
Fuselage Keel Pieces - 1.6mm sheet



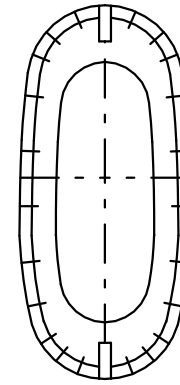
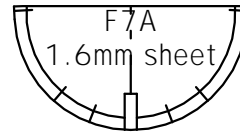
Construction
formers.
between
and (to
look).



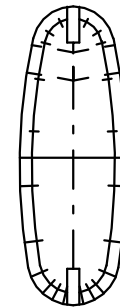
Cut formers to inside line
for "un-notched" construction



Example of "un-notched"
construction showing
stringers on top
of formers.

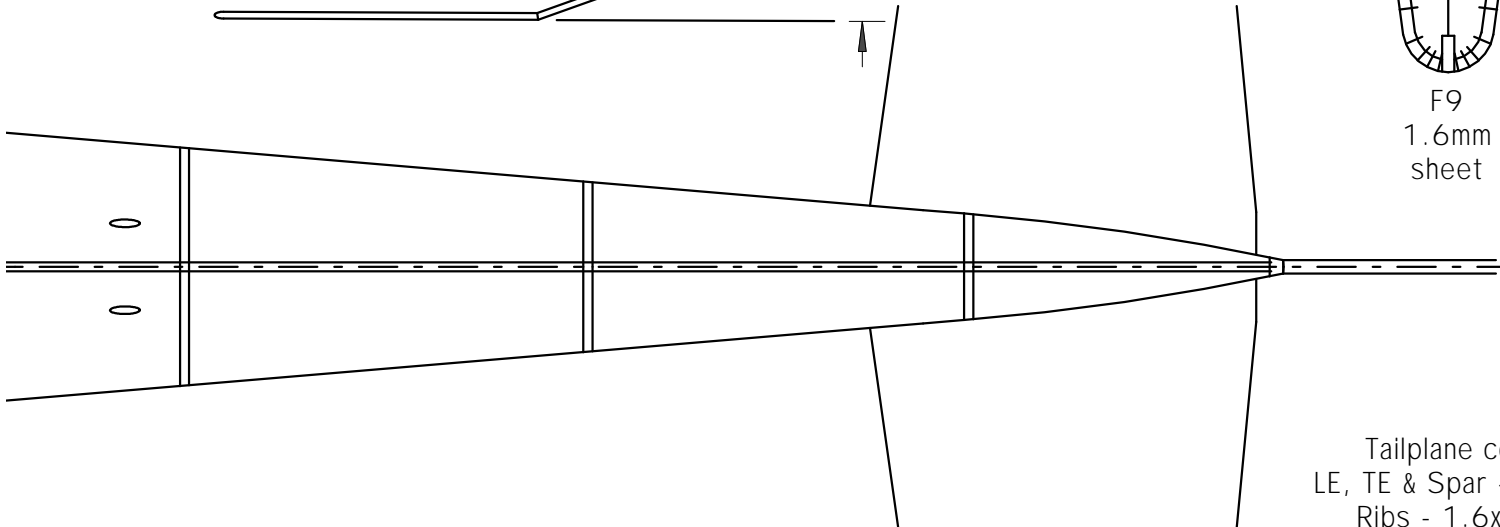
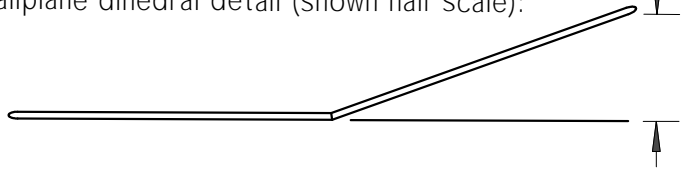


F8
1.6mm sheet

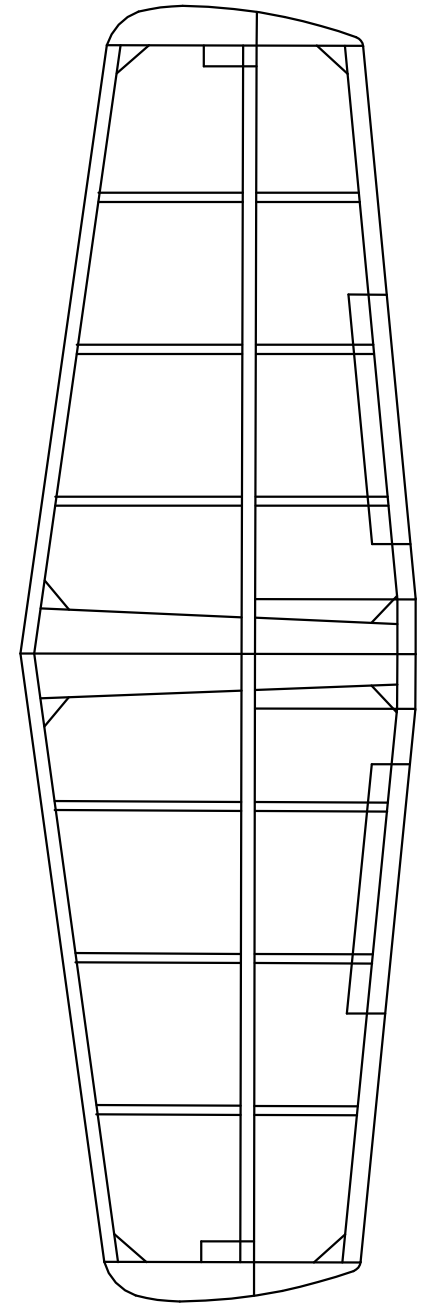


F9
1.6mm
sheet

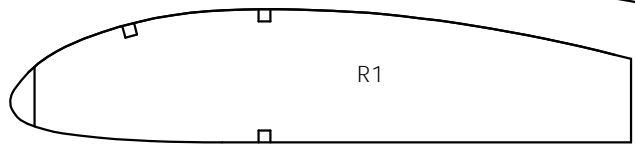
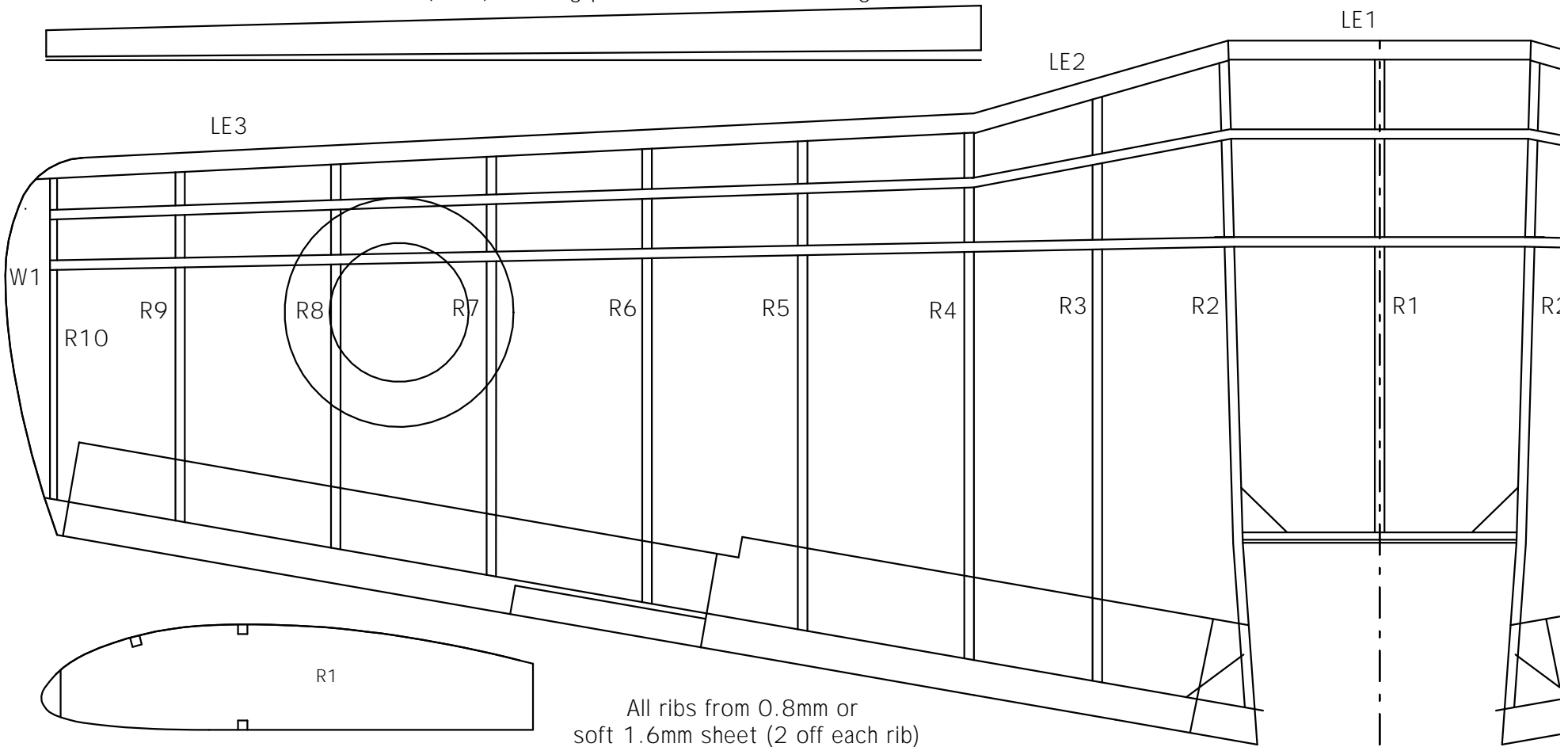
Tailplane dihedral detail (shown half scale):
28 mm Under tip



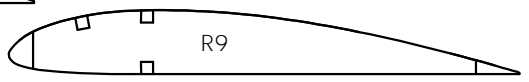
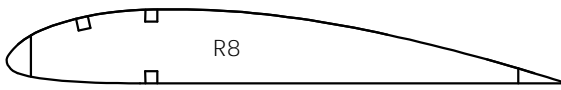
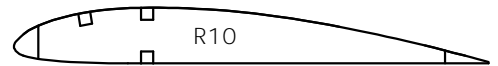
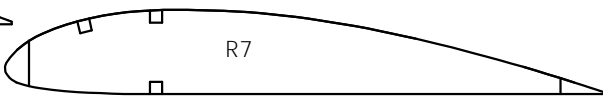
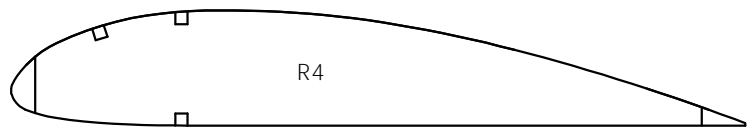
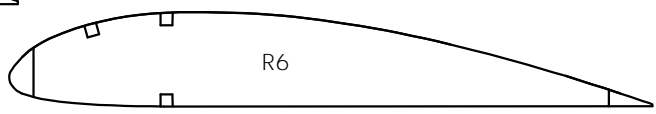
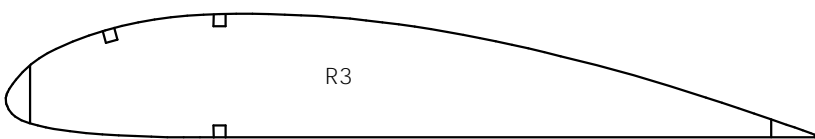
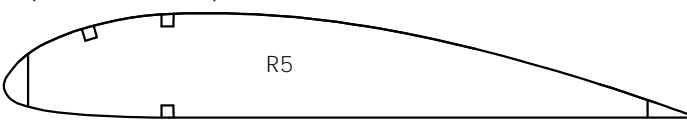
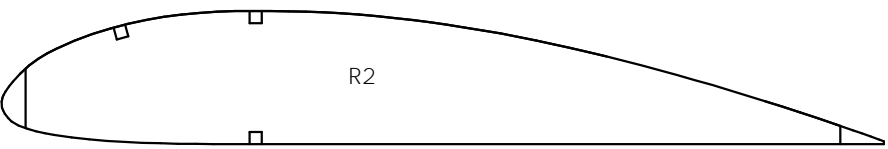
Tailplane construction:
LE, TE & Spar - 1.6mm square
Ribs - 1.6x0.8mm strip



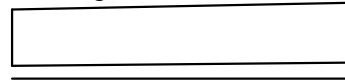
LE3 3.2mm (2 off) Showing position relative to building board



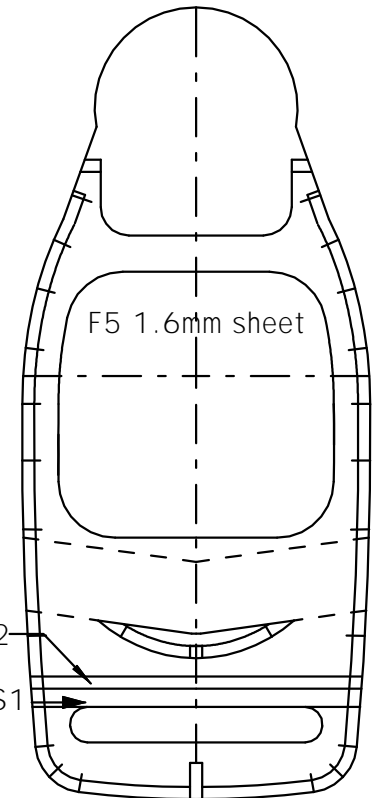
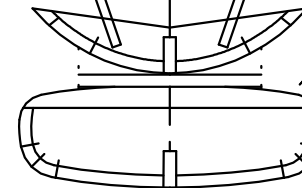
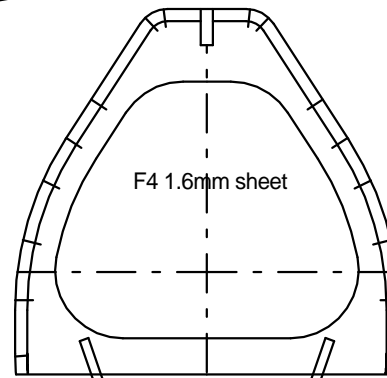
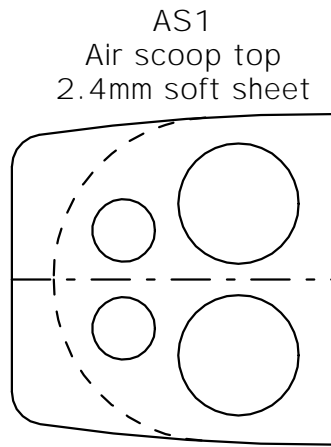
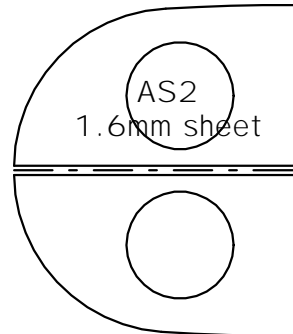
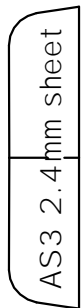
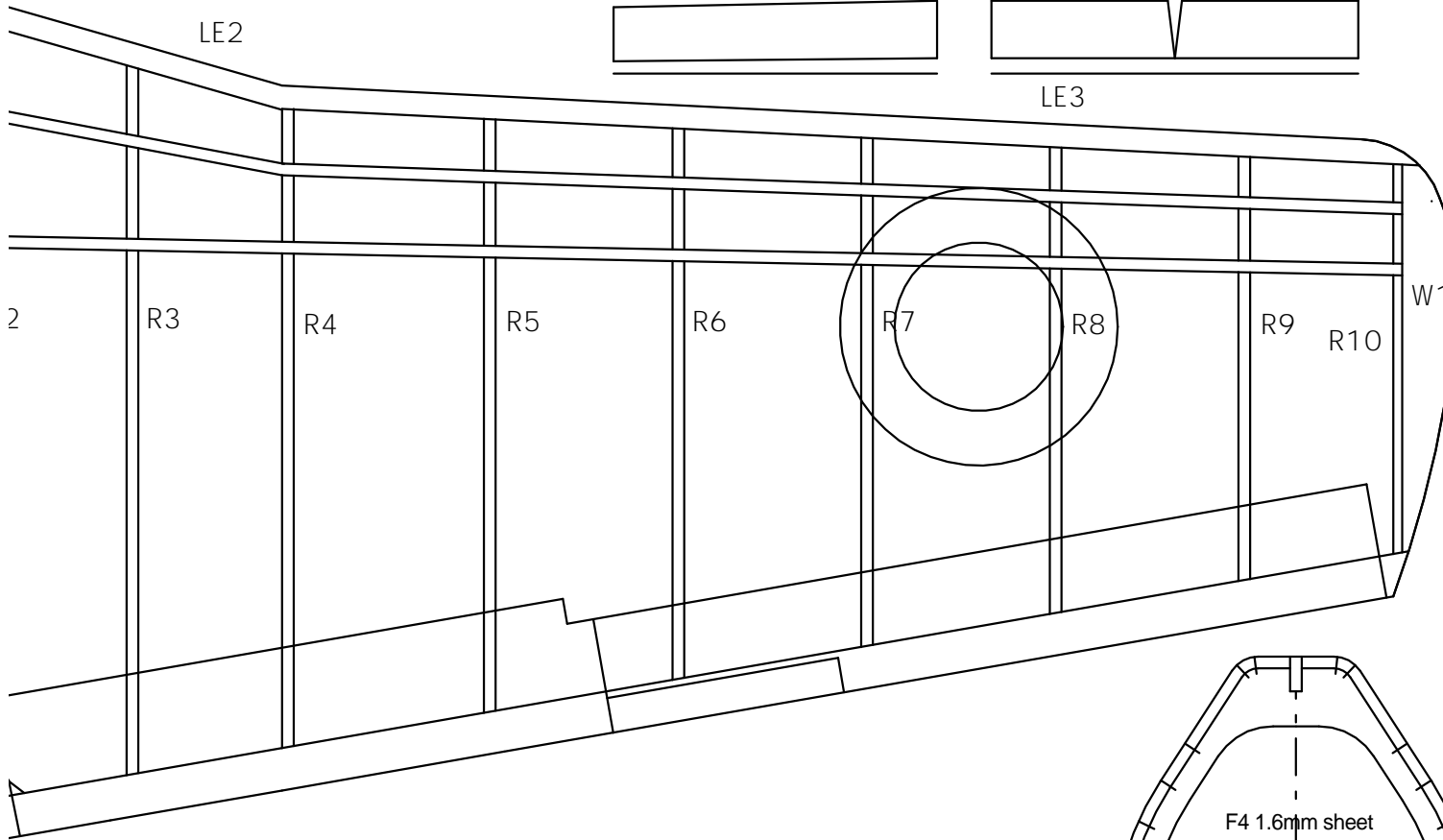
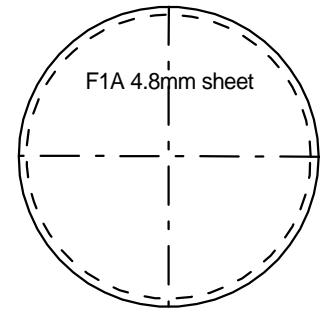
All ribs from 0.8mm or soft 1.6mm sheet (2 off each rib)



LE2 3.2mm (2 off) Showing position relative to building board



LE1 3.2mm (2 off) Showing position relative to building board



AS2
AS1