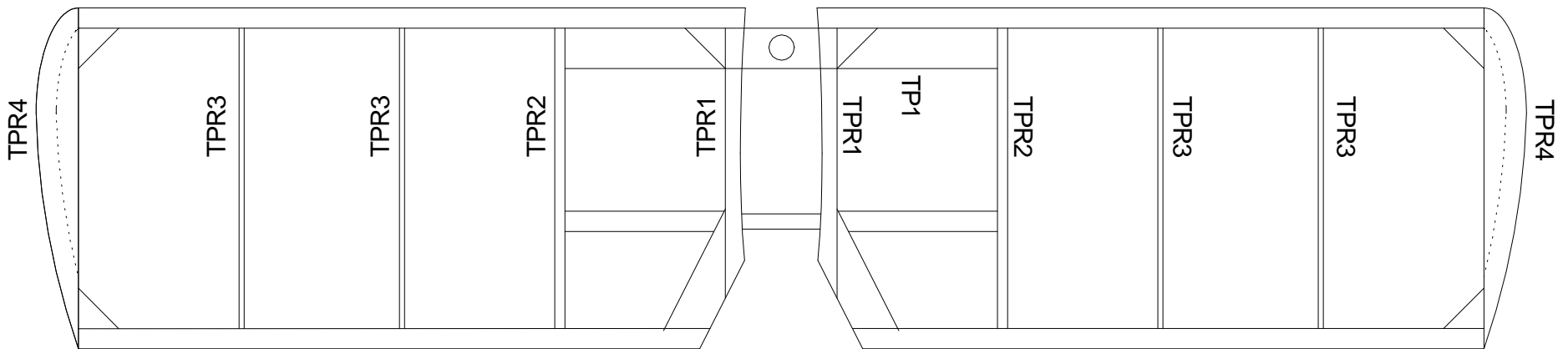
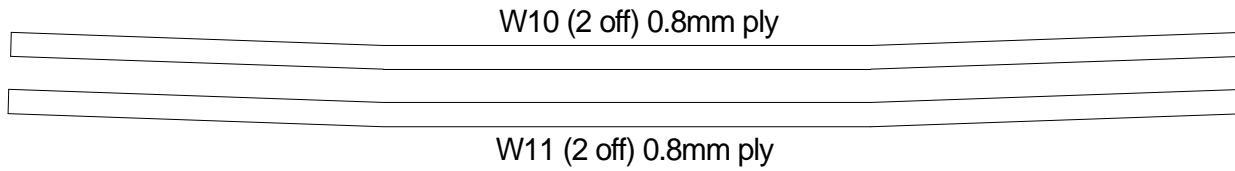
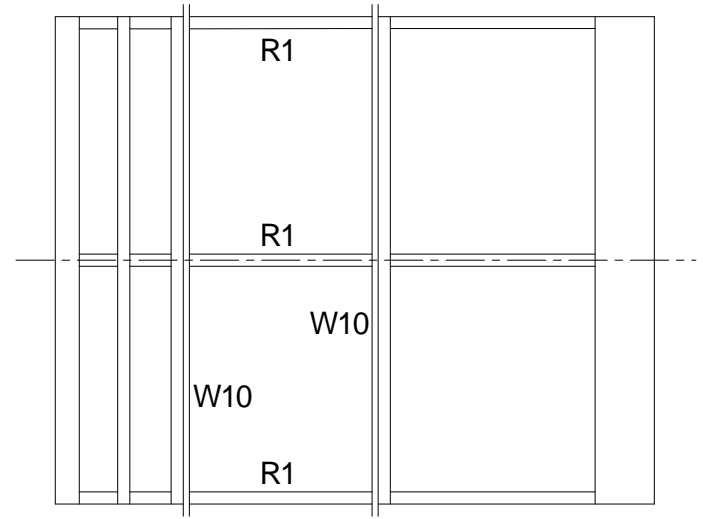
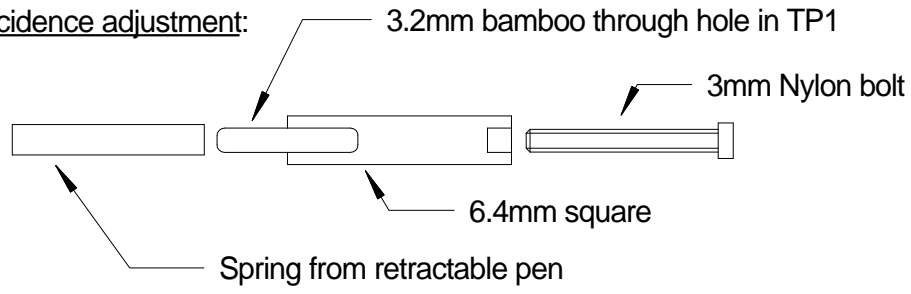
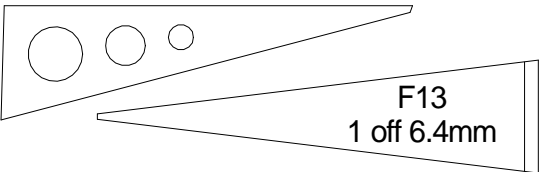
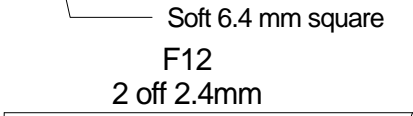
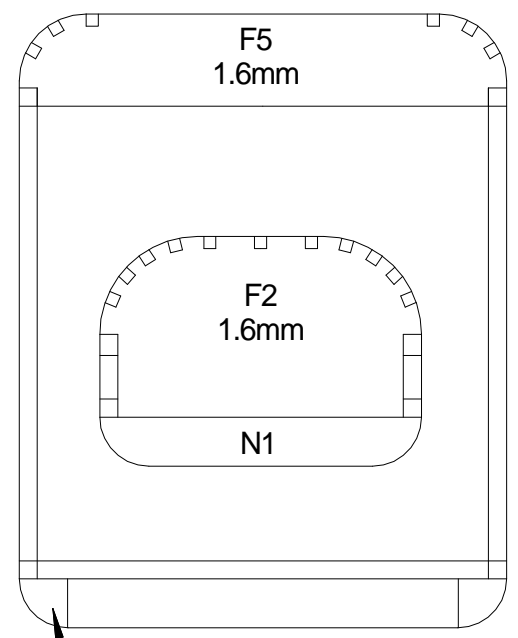
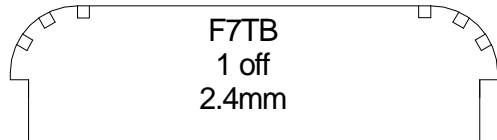
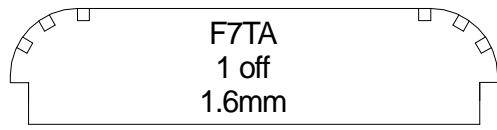
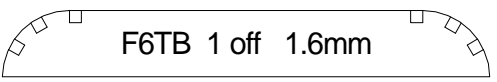
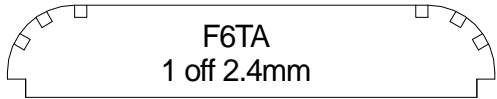
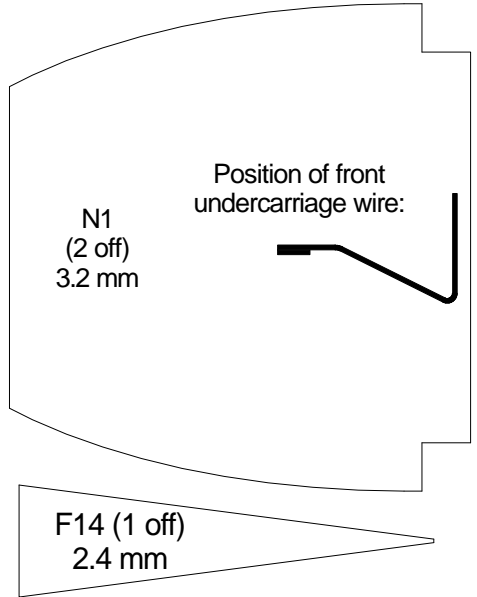
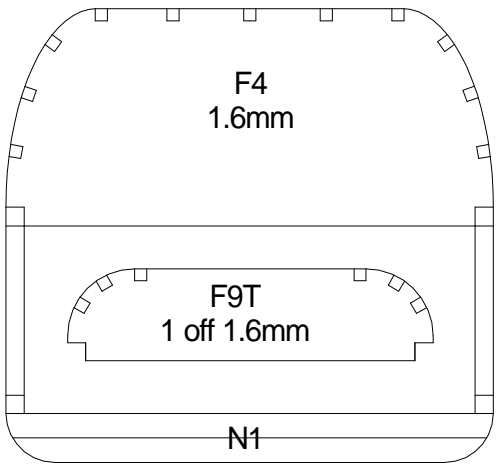
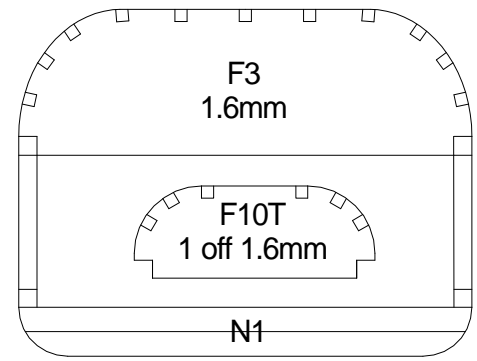
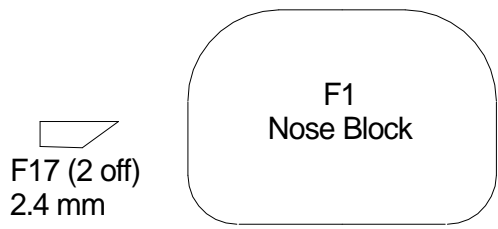
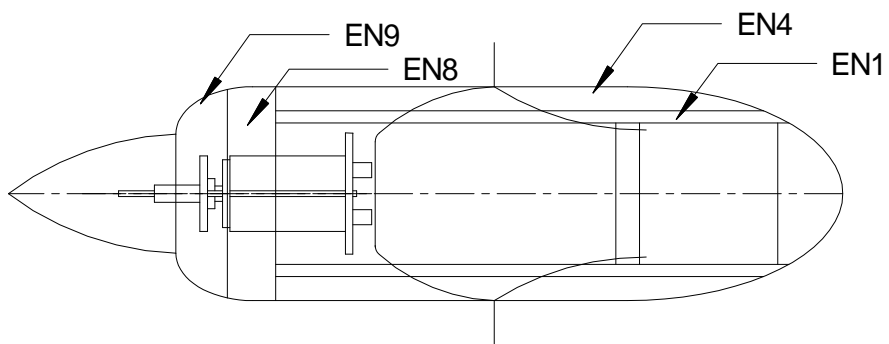
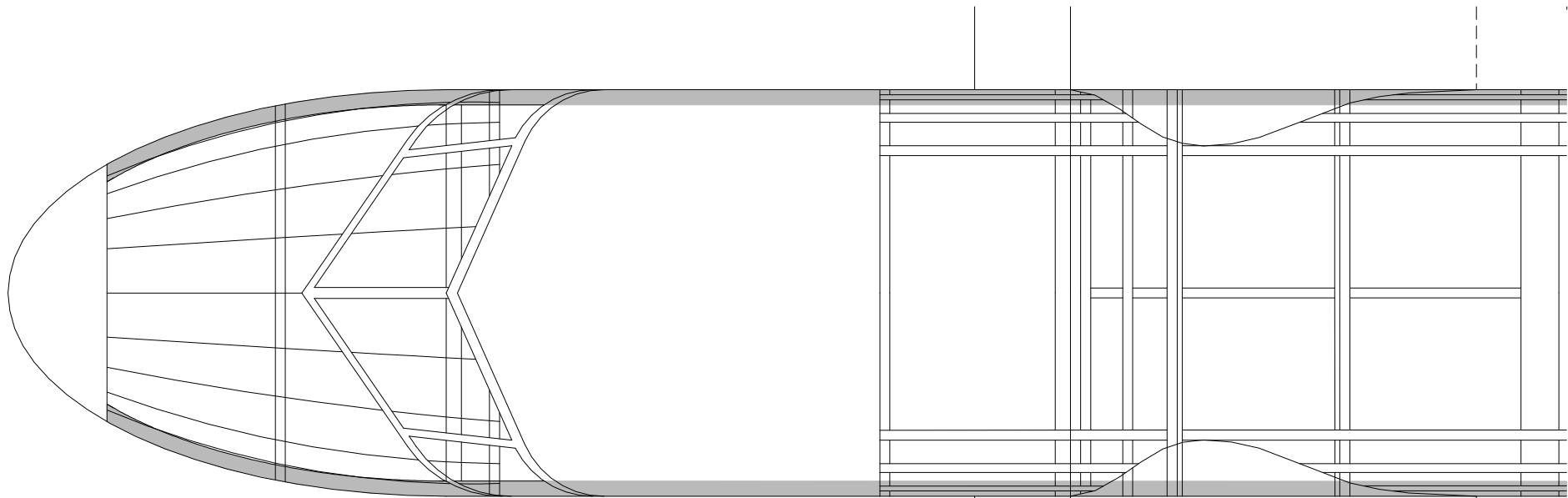


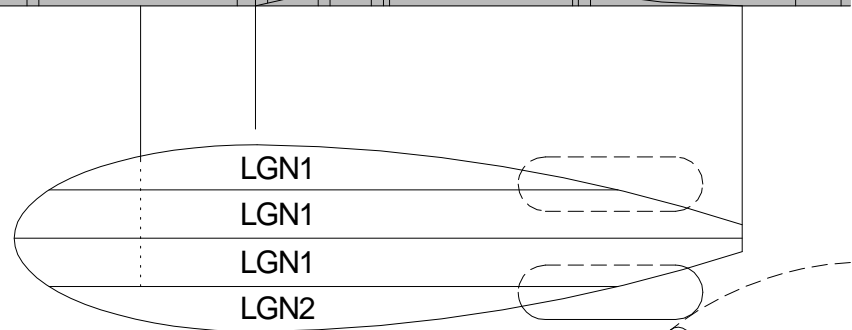
Tailplane incidence adjustment:



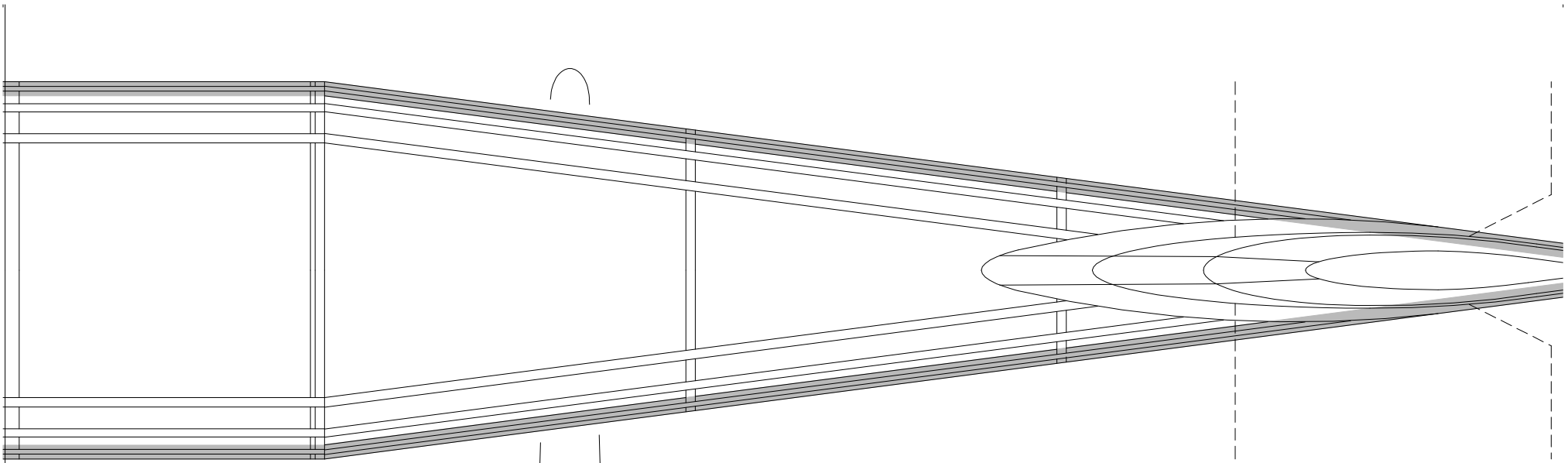




Engine nacelle top view



6.4mm dihedral under each wing tip

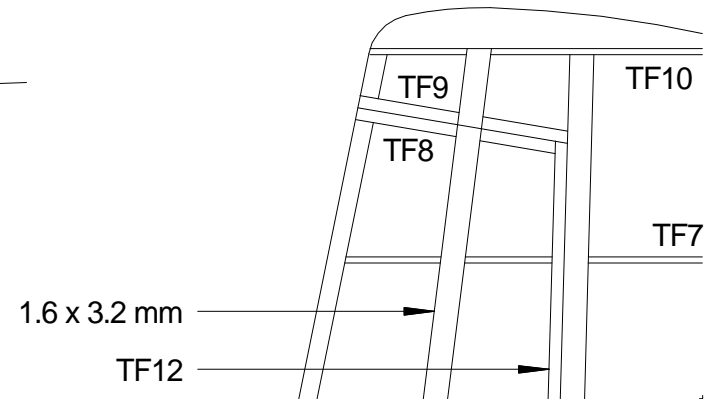
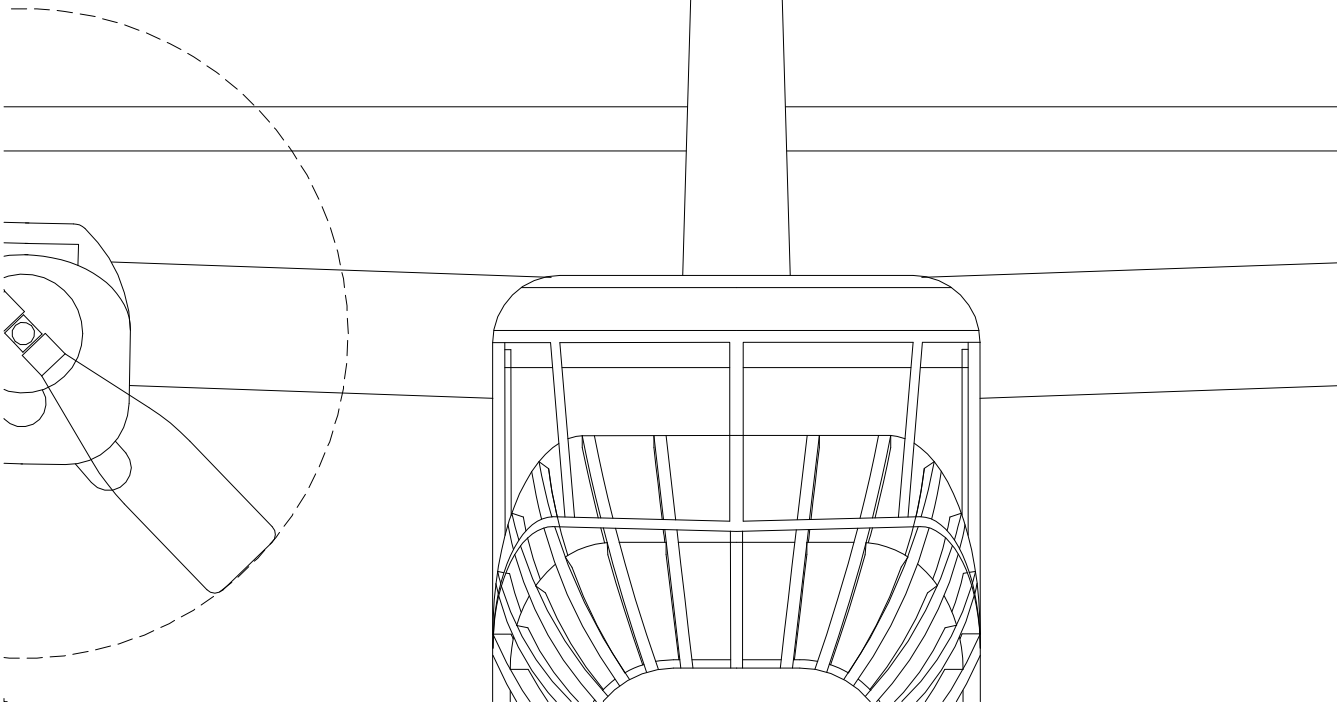


Metric conversions:

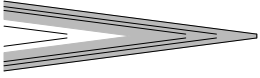
0.8mm	1/32"
1.6mm	1/16"
2.4mm	3/32"
3.2mm	1/8"
4.8mm	3/16"
6.4mm	1/4"

Fuselage construction:

- Main side frames (shaded in gray) from 2.4mm
- Diagonal bracing and window frames from 2.4 x
- Stringers on nose and rounded corners from 1.6
- Top and bottom formers from 1.6mm sheet



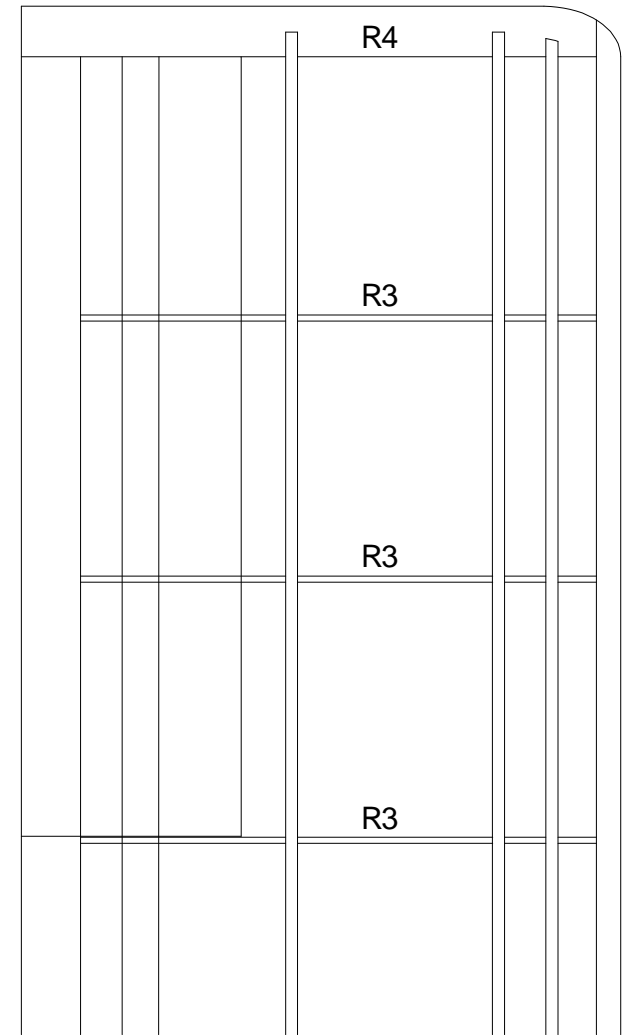
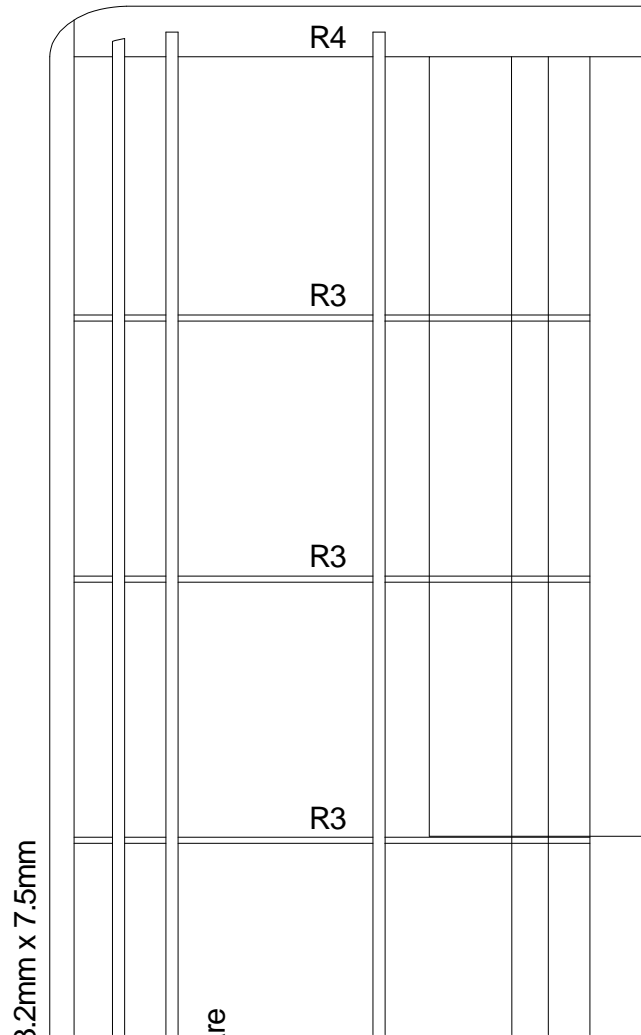
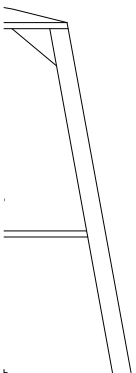
Lift struts from hard 2.4mm sheet (2 off)

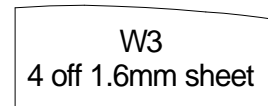
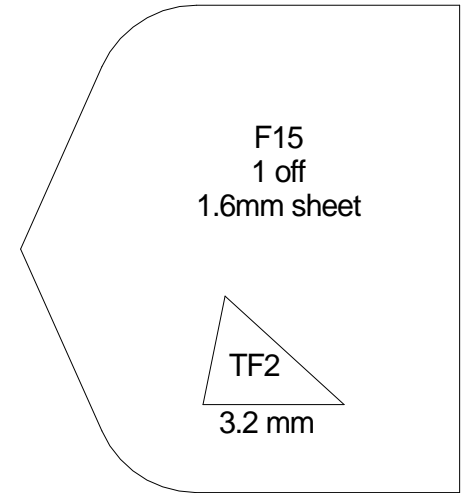
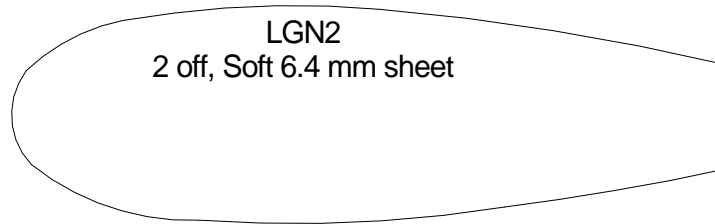
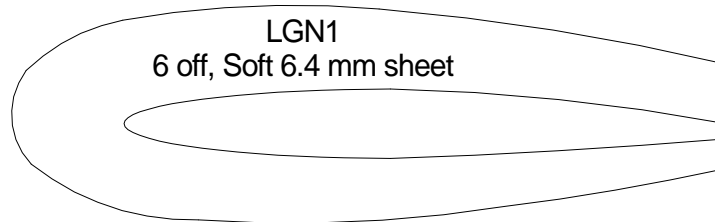
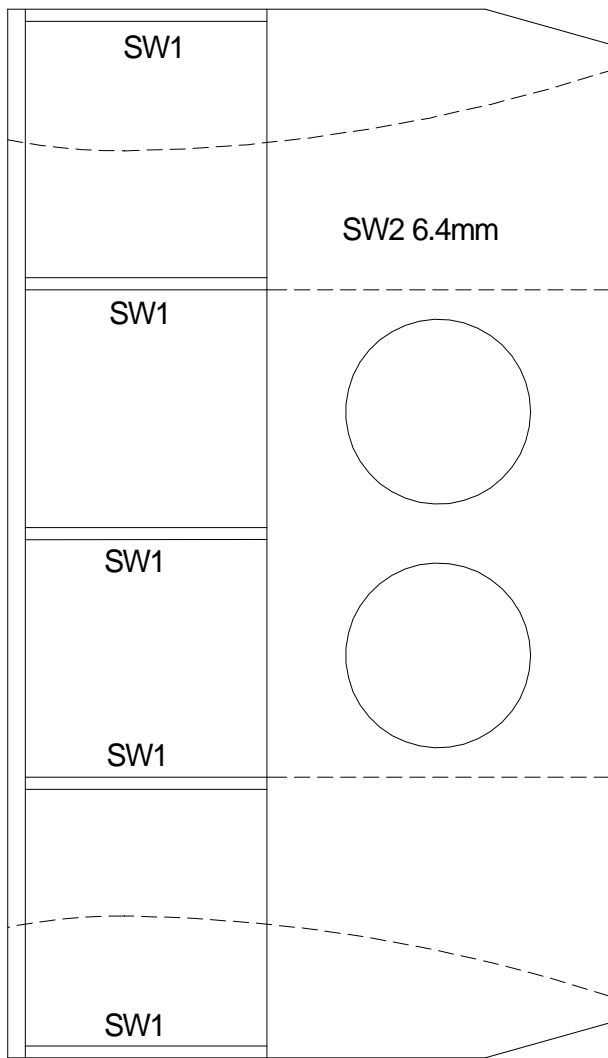


Wing construction:

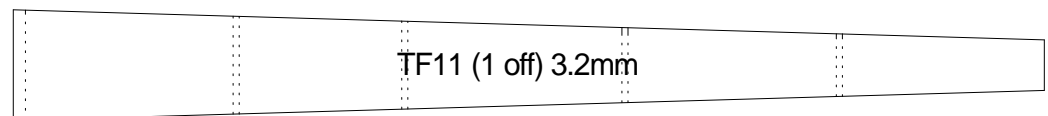
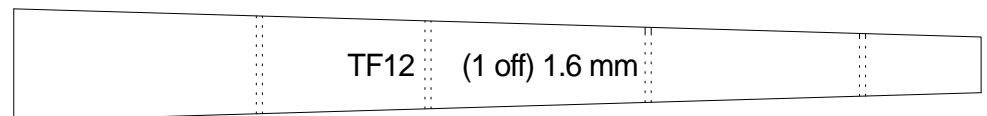
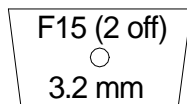
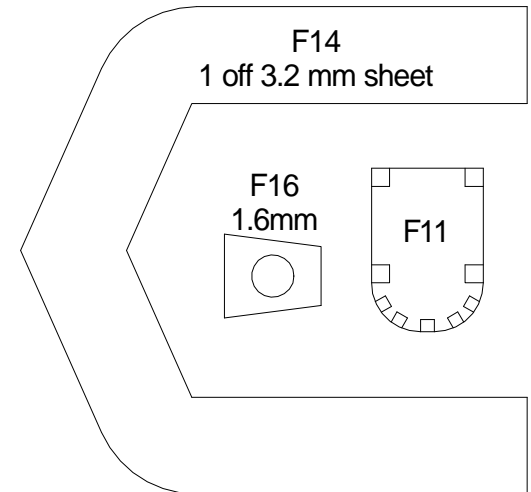
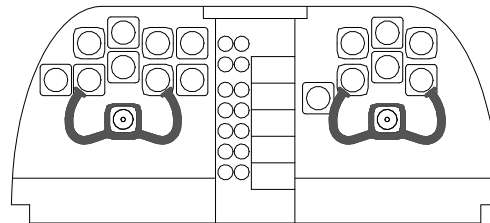
- Pin down trailing edge and position lower spars
- Glue ribs in place
- Add leading edge and upper spars
- Shape leading edge and cut out section for engine nacelles

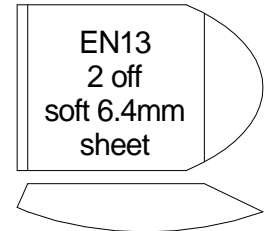
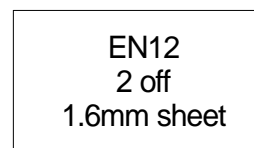
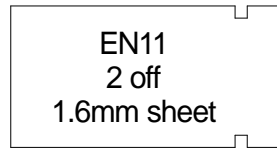
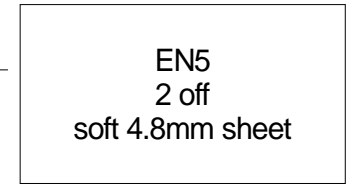
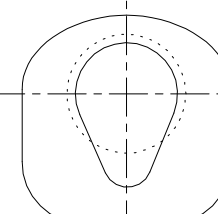
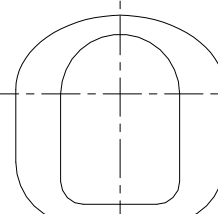
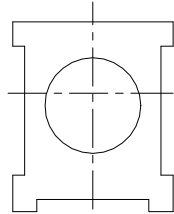
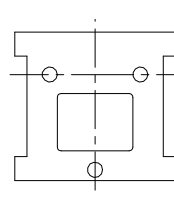
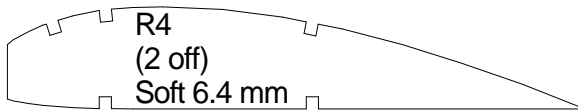
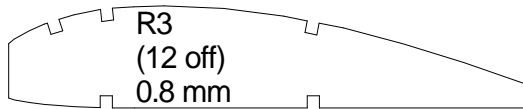
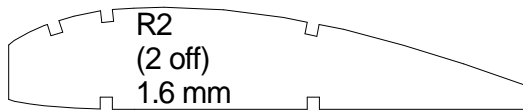
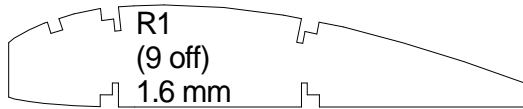
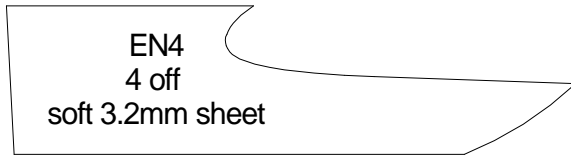
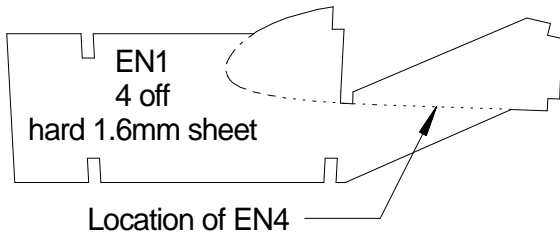
square
: 1.6mm strip
3mm square





Instrument panel (glue to F4)





TPR1 (2 off) 3.2mm

TPR2 (2 off) 1.6mm

TPR3 (4 off) 1.6mm

TPR4 (2 off) 6.4mm

SW1 (5 off) 1.6mm

TF9 1.6 mm

TF8 1.6 mm

TF10

TF7

TF6

TF5

TF4

